

FISH-PASSING FACILITY FOR RIVER SECTIONS SHALLOWED AS A RESULT OF DRAWING-OFF HPS OPERATION

Areas of Application

The facility is to be used for enabling fish passage to spawning sites in the case of river shallowing as a result of operation of small drawing-off hydropower station and the appearance of obstacles to fish migration, like rapids and small waterfalls

Specification

The fish ladder is a wooden tray narrowing downward, with transverse partitions located alternately on each side. The ladders are installed in the places critical for fish passage (rapids or drops) with a maximal height of fish elevation of up to 2 m

Advantages

The fish ladder can be installed in almost any place of river without disrupting the natural stream bed; it is cheap, reusable, environment friendly, does not require any heavy equipment for installation

Stage of Development. Suggestions for Commercialization

IRL3, TRL4

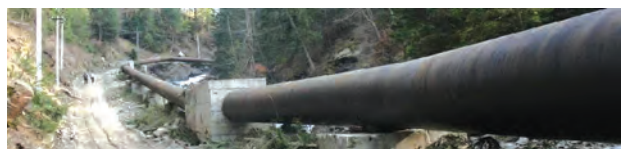
Patent sale; consultation services regarding the installation of fish ladders and control of their effectiveness are provided

IPR Protection

IPR3

Contact Information

Oleksandr Ye. Usov, Institute of Hydrobiology of the NAS of Ukraine;
+38 044 254 11 41, e-mail: post_mail@hydrobio.kiev.ua



River shallowed as a result of drawing off



Spawning run of trout