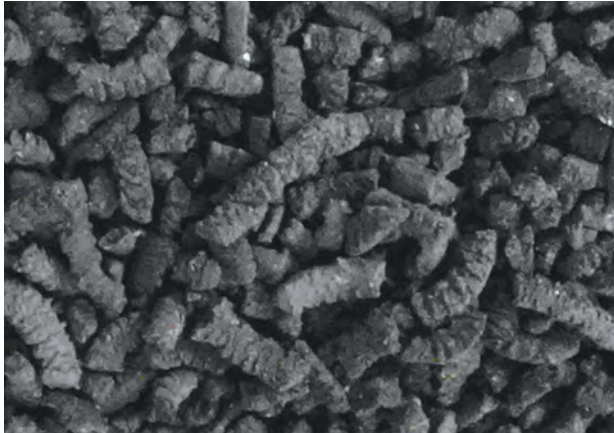
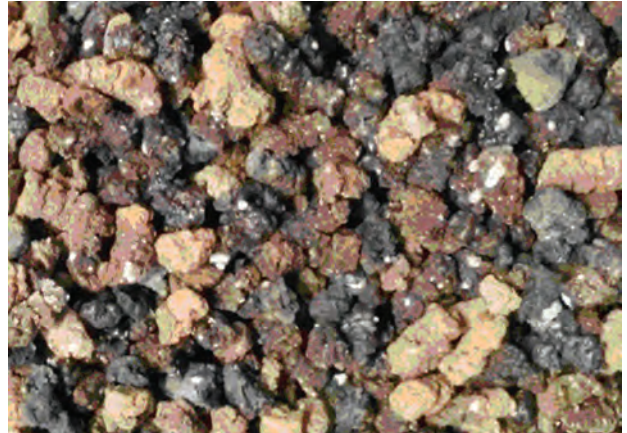


PLANT FOR THERMAL CONVERSION OF SEWAGE SLUDGE



Sludge



Ash

Areas of Application

This plant is for treating WWTP sludge that has been kept at filtration fields for a long time in order to use it for gas production. The ash remaining from combustion can be used for producing construction materials

Specification

The sludge conversion results in:

Ash output per dry weight of fuel, %	35–42
Combustible gas with a combustion heat, MJ/m ³	5.4–6.9
Gas output, m ³ /kg	0.8–1.2

Advantages

The plant has no counterparts. Its main advantages are mobility, waste-free production, and easy assembly

Stage of Development. Suggestions for Commercialization

IRL4, TRL4

Seeking partners for serial production; customized design, upon request



Plant prototype

IPR Protection

IPR3

Contact Information

Sergii A. Zoshchenko, Institute of Renewable Energy of the NAS of Ukraine;
+38 044 206 28 09, +38 067 508 40 90, e-mail: renewable@ukr.net