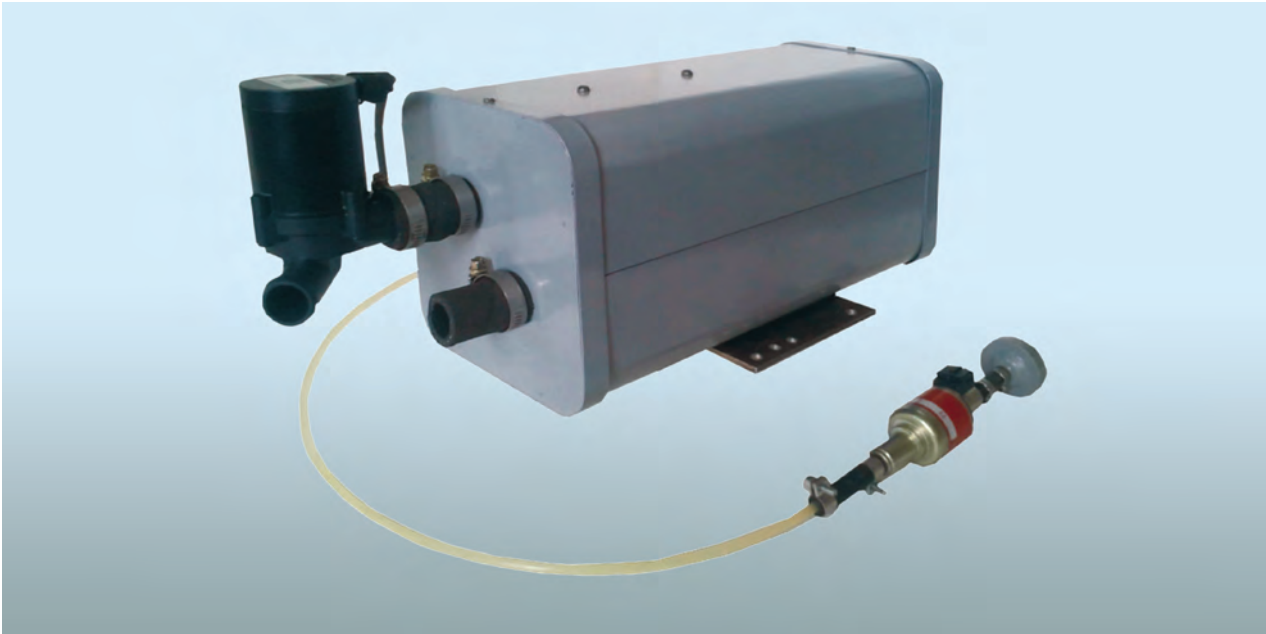


THERMOELECTRIC HEATER FOR VEHICLES



Areas of Application

The device is designed for warming up the engine and heating the passenger compartment at low ambient temperature due to a direct conversion of thermal energy of diesel fuel combustion to electric power. The generated thermal energy is used to warmup the engine and to heat the car passenger compartment, whereas the electric power goes for power supply to heater components and battery recharge

Advantages

No world analogs, autonomous operation, does not require power storage device. Excessive electric energy of thermal generator enables both recharging the battery and supplying power to the heating equipment

Specification

Thermal power, W	1300–1500
Electric power, W	70–90
Heat carrier heating temperature, °C	30–70
Electric voltage, V	12
Heater weight, kg	8
Overall dimensions, mm	150 × 200 × 390

Stage of Development.

Suggestions for Commercialization

IRL6, TRL6

Manufactured and supplied, upon request

IPR Protection

IPR3

Contact Information

Pavlo D. Mykytiuk, Institute of Thermoelectricity of the NAS of Ukraine and the Ministry of Education and Science of Ukraine;
+38 037 224 44 22, e-mail: anatysh@gmail.com