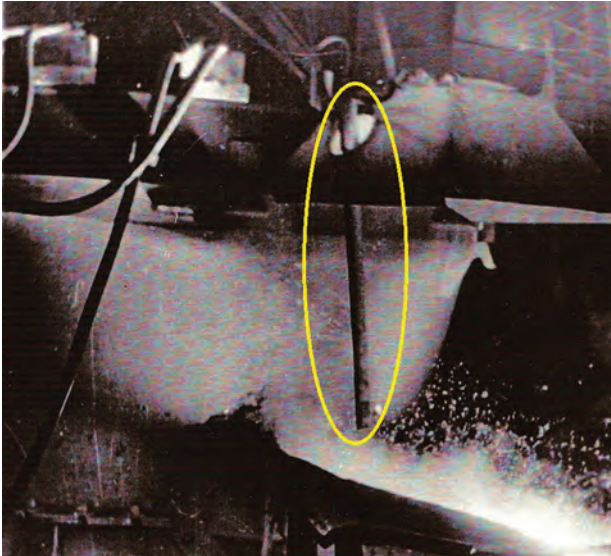
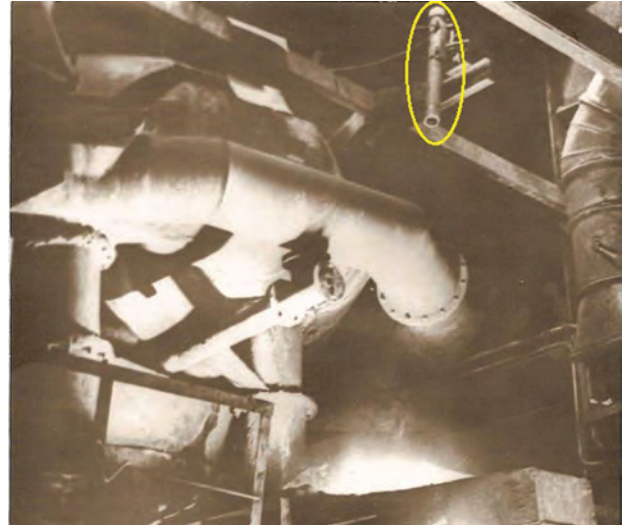


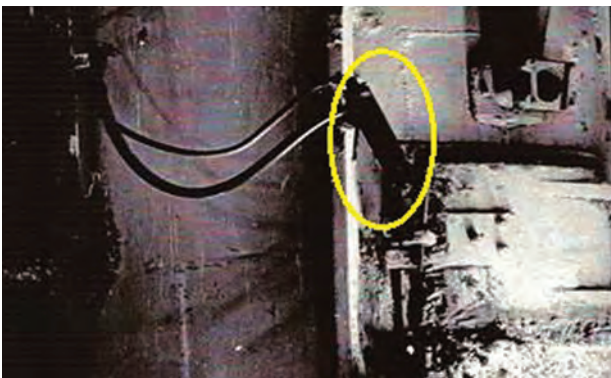
CONTACTLESS THERMOMETRY SYSTEM



Contactless temperature control of cast iron and steel while tapping from arc furnace



Contactless temperature control of cast iron while tapping from cupola furnace with a closed syphon spout and a rotary mixer



Contactless temperature control of cast iron while tapping from cupola furnace with a stationary mixer

Areas of Application

Continuous contactless control of melt metal temperature in stream while tapping or pouring from metallurgical furnaces. Can be used for continuous temperature control of slab under mold, metal sheets, strips, and wires, as well as in chemical, refractory, glass, and other industries

Specification

Range of measurable temperatures, °C	200–2500
Primary measurement error, %	≤1.0

Stage of Development.
Suggestions for Commercialization

IRL8, TRL8
Manufacture, delivery, warranty service,
and staff training, upon request

IPR Protection
IPR3

Advantages

The applied multicolor algorithms of primary pyrometric information processing and the new measurement methods provide much higher metrological characteristics and widen the application scope of continuous temperature control under difficult conditions at metallurgical and other plants

Contact Information

Anatoliy V. Nariivskiy, Physico-Technological Institute of Metals and Alloys of the NAS of Ukraine;
+38 044 424 35 15, e-mail: metal@ptima.kiev.ua