

The European Commission's science and knowledge service

Joint Research Centre

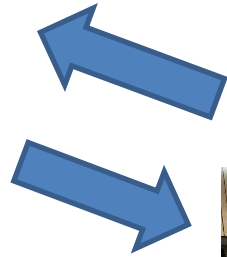
The role of scientific evidence for effective policies

Kiev 14 September 2016

Vladimír Šucha,
Director-General



The need for evidence to inform policy



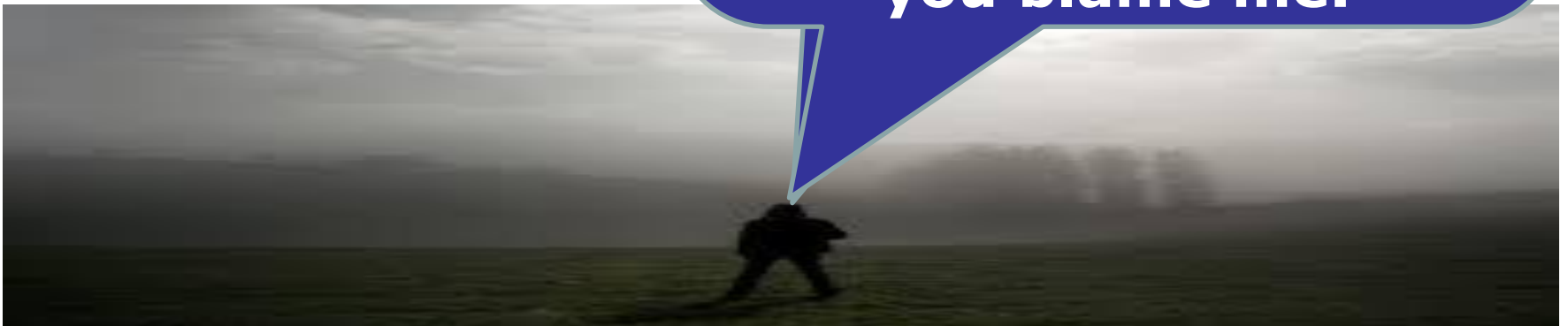
Two Worlds in Collision





Can

You must be a policymaker. You came out of nowhere with your questions, I give you the most accurate and precise answer I can, you're still lost, and you blame me!

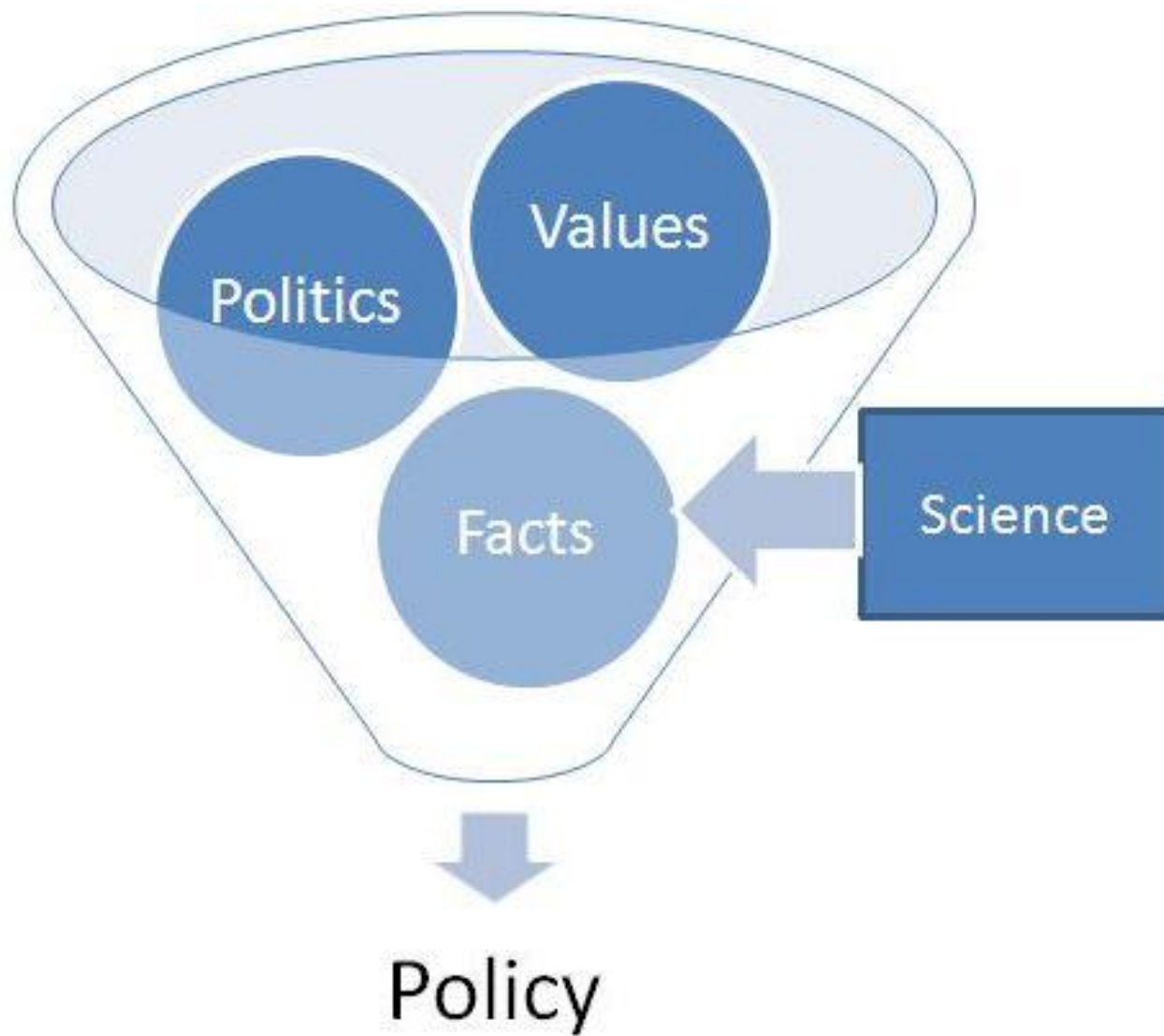


Source: Creating common purpose: the integration of science and policy in Canada's Public Service, Canadian Centre for Management Development, 2002

A photograph of a coastal erosion site. In the foreground, there is a dark, sandy beach with scattered rocks. A low, dark stone wall runs across the middle ground. Behind the wall, a wooden walkway with a metal railing extends across the frame. In the background, there are dark, rocky cliffs under a clear blue sky. Two people are visible: one on the left near a small structure, and another on the right walking on the beach.

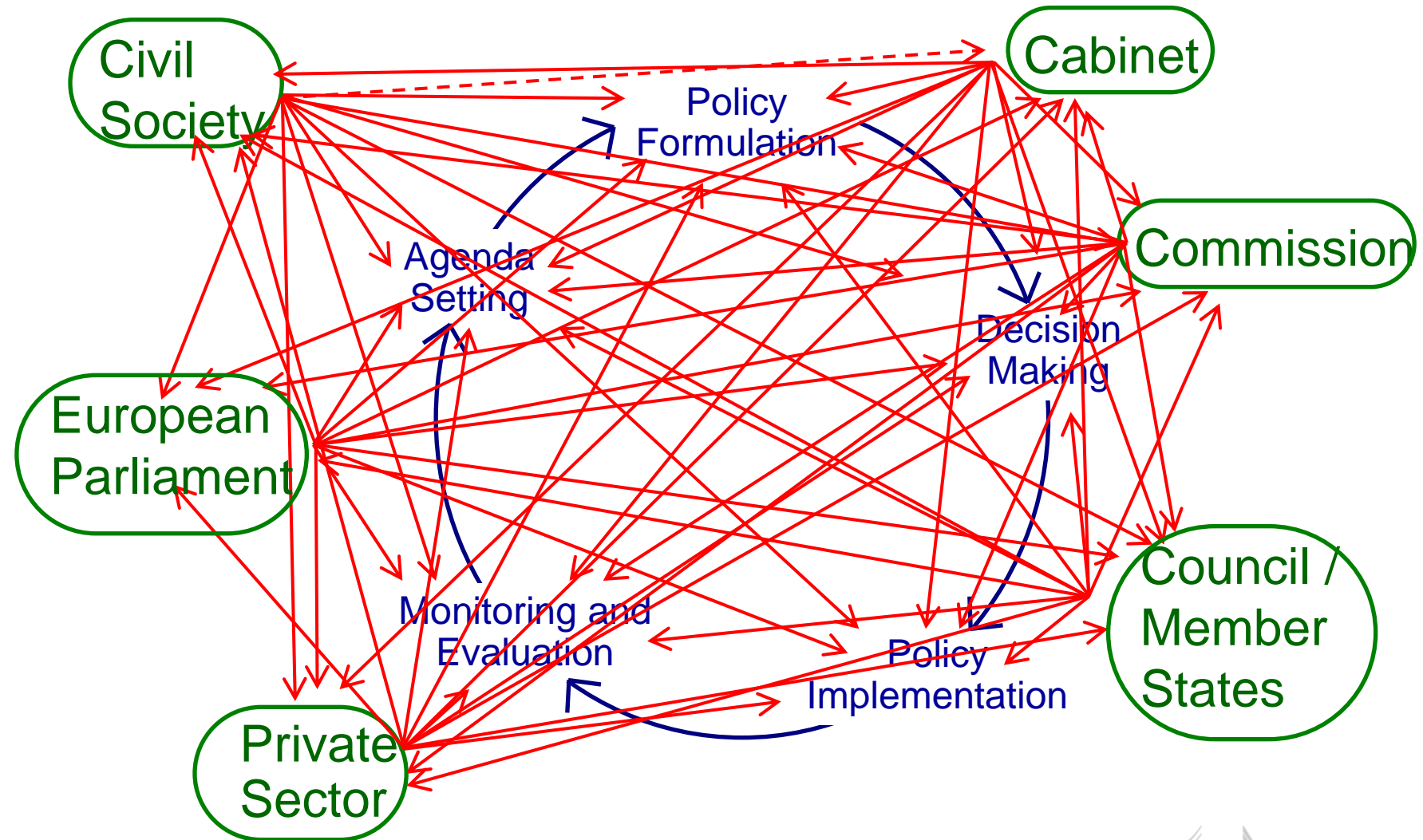
SCIENCE

POLICY



Classic policy cycle is a concept only

We work daily in the reality.



JRC's Mission

Mission:

"As the science and knowledge service of the Commission our mission is to support EU policies with independent evidence throughout the whole policy cycle."

DG JRC Facts and Figures

- 6 geographic locations
- **Around 3000 staff**, including PhDs and visiting scientists
- **42 large-scale research facilities**, more than 110 online databases
- More than **100 economical, bio-physical and nuclear models**
- **Focus** on the **priorities** of the Commission
- Work for **more than 20 policy Departments**
- Expertise in a **wide range of areas** from economic and financial analysis through to energy and transport, health, environment and nuclear safeguards

DG JRC laboratories

Hot Cells Laboratory



European Laboratory for Structural Assessment (ELSA)



Vehicles Emissions Laboratory (VELA)



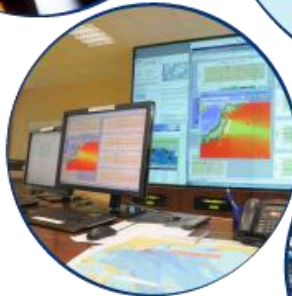
Nano-Materials Laboratory



European Reference Laboratory for Air Pollution (ERLAP)



European Crisis Management Laboratory



Fuel Cells Laboratory



Van Der Graaf Generator



European
Commission

Dealing with the Deluge



*Structuring
knowledge both
thematically and
geographically*

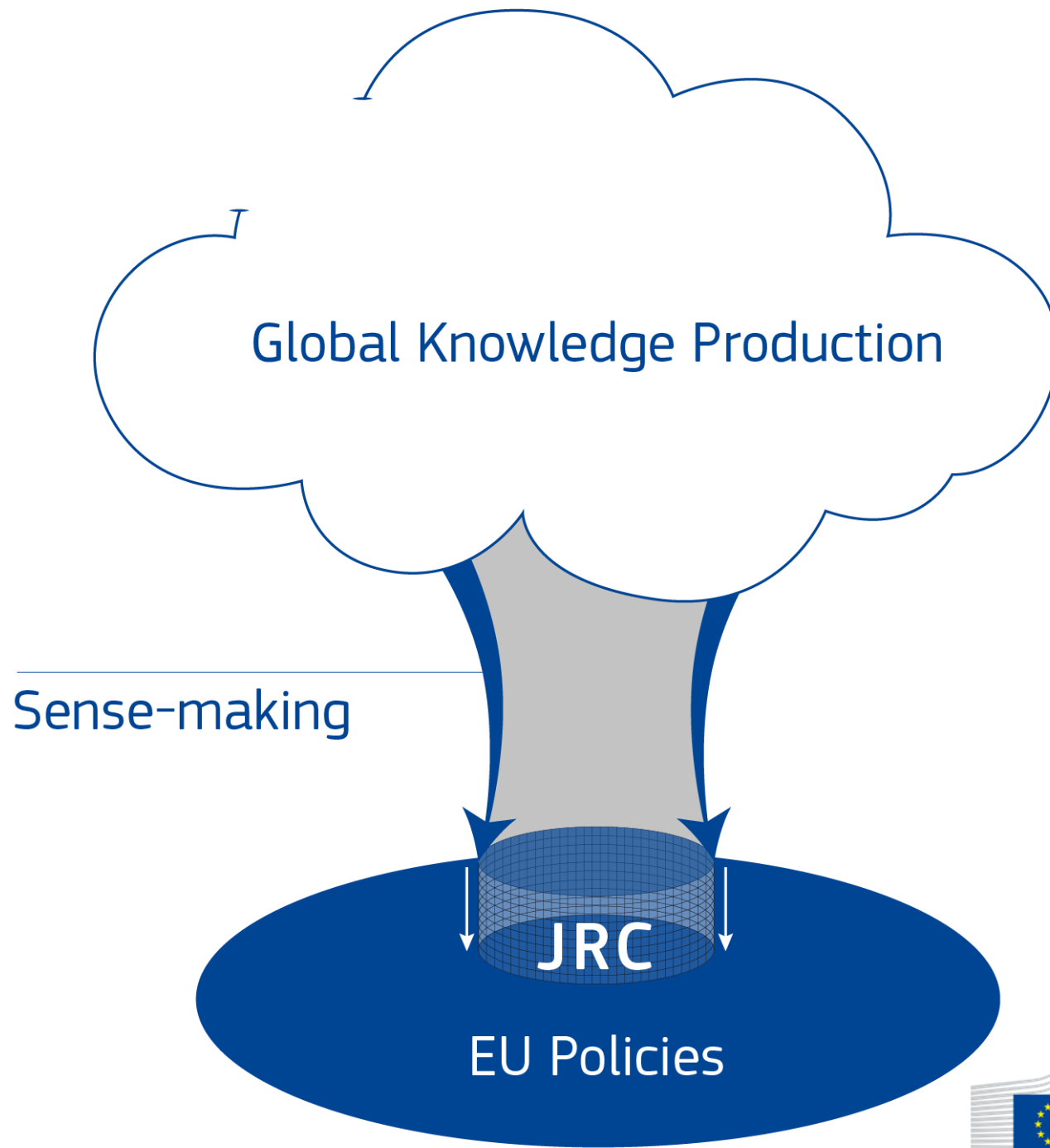


Image Source: IEEE

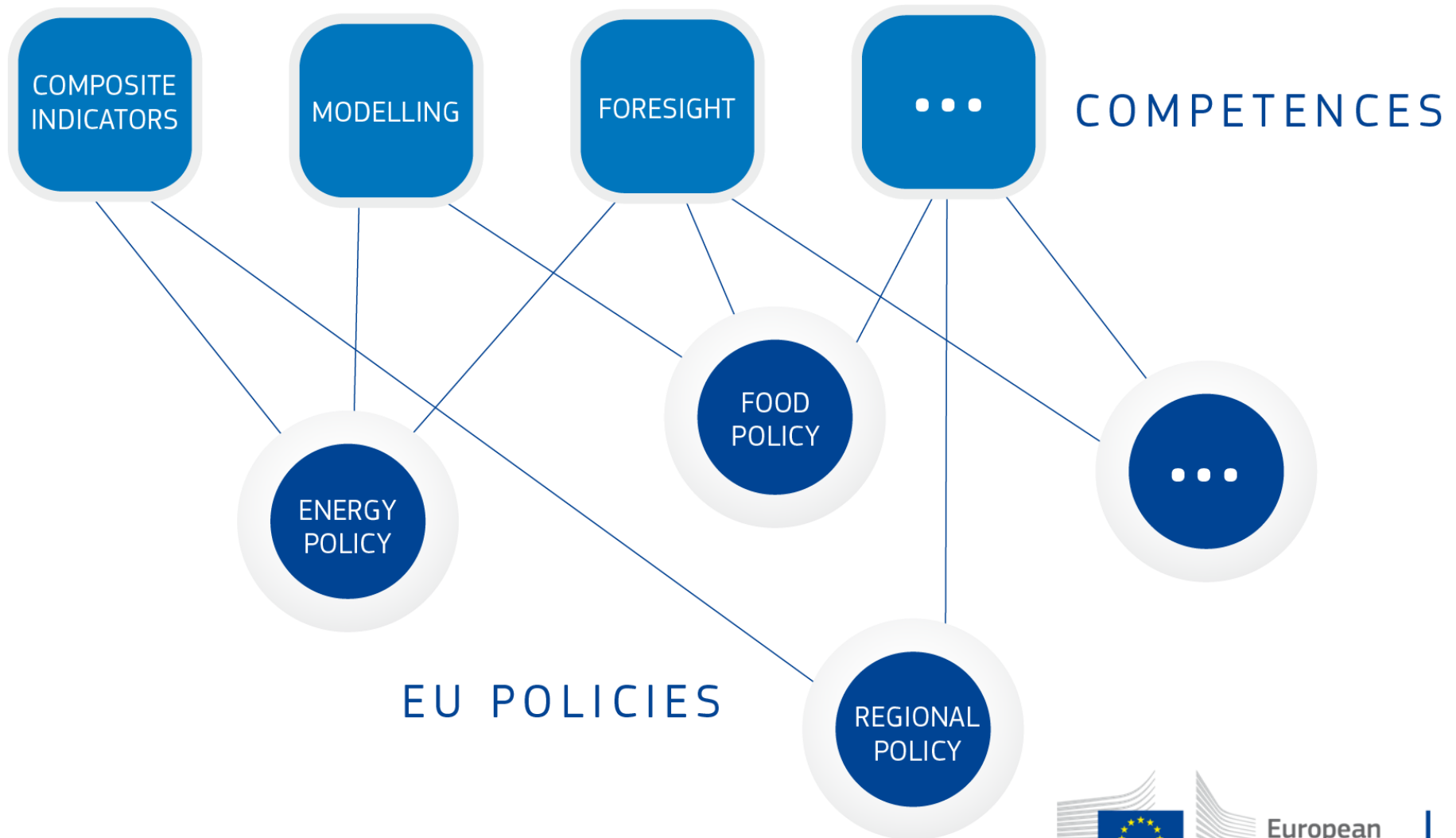
Knowledge Centres

Competence Centres

***Country-based
knowledge***

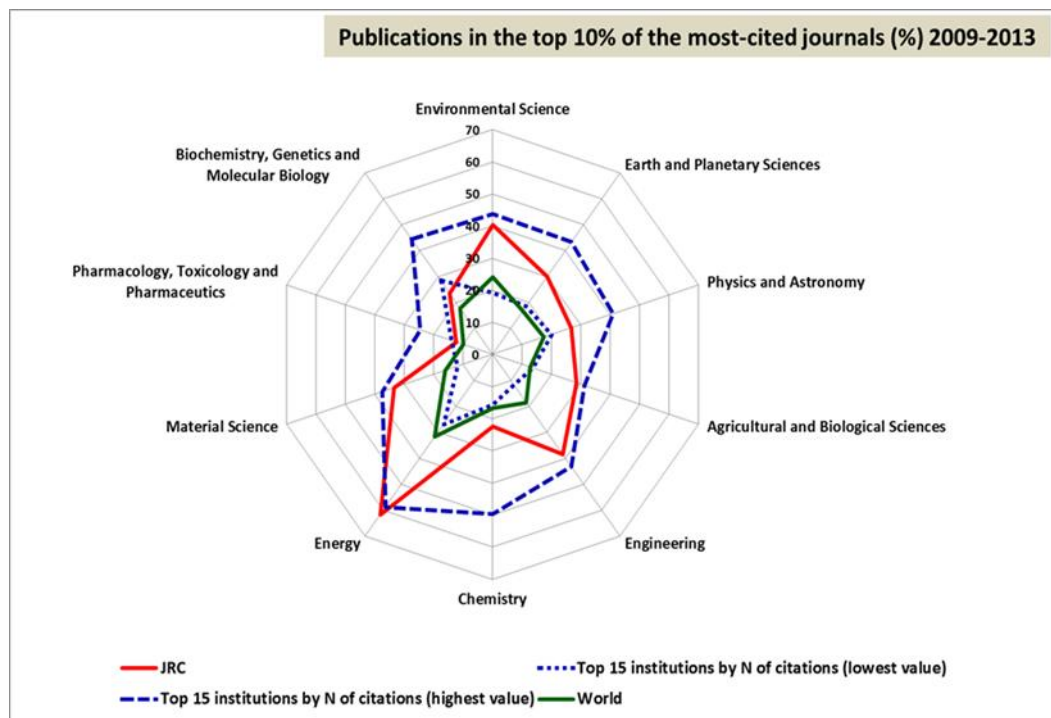


Combining Competences



DG JRC Scientific Excellence

- **40-50%** of JRC publications belong **to the top 25% most cited publications**
- **Up to 23%** belong to the top **10% most cited publications**
- **Up to 3%** belong **to the top 1% most cited publications**



DG JRC Thematic Priority Nexus

**Data
Digital
Transformation**

**Energy
Transport**

**Civil
Security**

**Skills
Education
Employment**

**Migration
Territorial
Development**

**Food
Nutrition
Health**

**Economy
Finance
Markets**

**Innovations
Systems/
Processes**

**Climate
Change,
Resources**

**People
Governance
Society**



European
Commission

Strategic partnerships

Collaboration Agreements, Memoranda of Understanding, Letters of Intent...

Scientific networks

Partnering in H2020 calls

Joint work in research, publications and events

Exchange of information and data

...but no transfer or money possible!



Examples of JRC collaborations



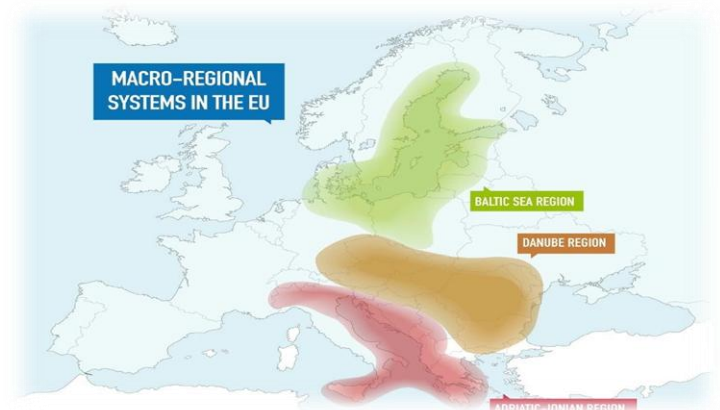
**R&I strategies for
Smart Specialisation**



**JRC trainings & collaborative
doctoral partnerships**



Access to research infrastructures



**JRC support to
macro-regional strategies**

INFORMATION EVENT ON

Research cooperation between JRC and Ukraine

14 September 2016

National Academy of Sciences
of Ukraine, Great Conference Hall, Kiev



© European Union, 2016



Thematic sessions

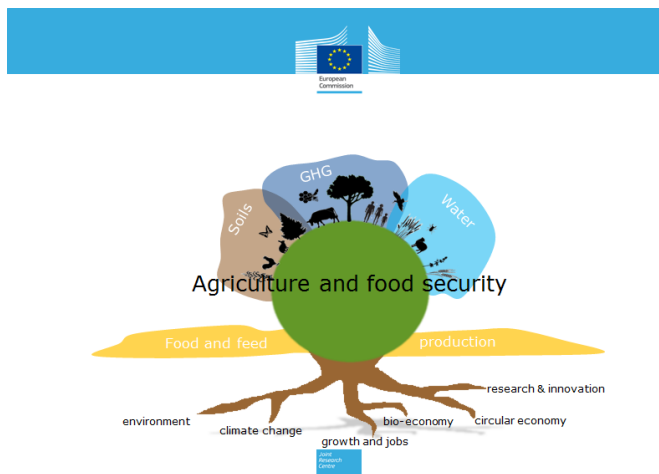
1

The Smart Specialisation approach



2

Agriculture and food security



3

Disaster Risk Management



Stay in touch



JRC Science Hub: ec.europa.eu/jrc



Twitter: @EU_ScienceHub



Facebook: EU Science Hub - Joint Research Centre



LinkedIn: Joint Research Centre



YouTube: EU Science Hub