



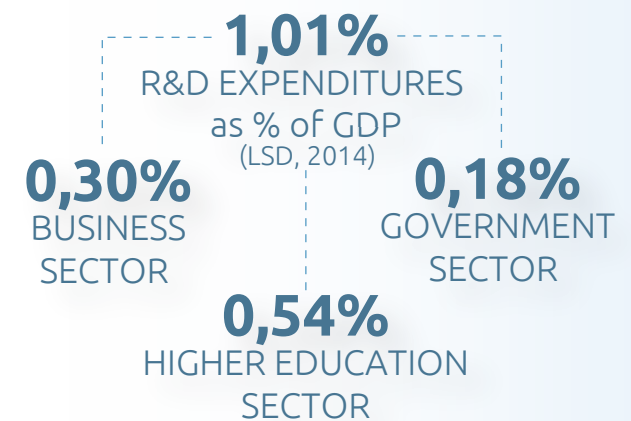
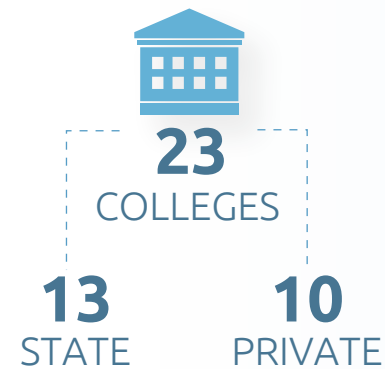
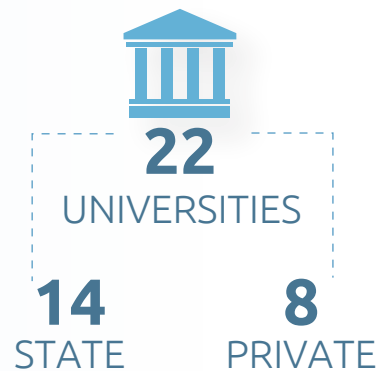
# NATIONAL RIS3 OF LITHUANIA

JURGITA PETRAUSKIENĖ / 2016 09 15, Kiev



# • THE CONTEXT: RTDI LANDSCAPE •

LITHUANIA HIGHER EDUCATION, R&D, INNOVATION



## • STARTING POSITION: CHALLENGES OF INNOVATION SYSTEM •



**DOMINANT TRADITIONAL SECTORS – LITTLE  
OR NO KNOWLEDGE-BASED GROWTH**



**PROCESS-ORIENTED POLICY  
IMPLEMENTATION**



**FRAGMENTATION OF R&I POLICY PRIORITIES,  
PROGRAMMES, FUNDS AND INSTITUTIONS**



**ALMOST ALL EXPENDITURE ON  
R&D FROM PUBLIC SECTOR**



**LACK OF INTER-INSTITUTIONAL  
COOPERATION**



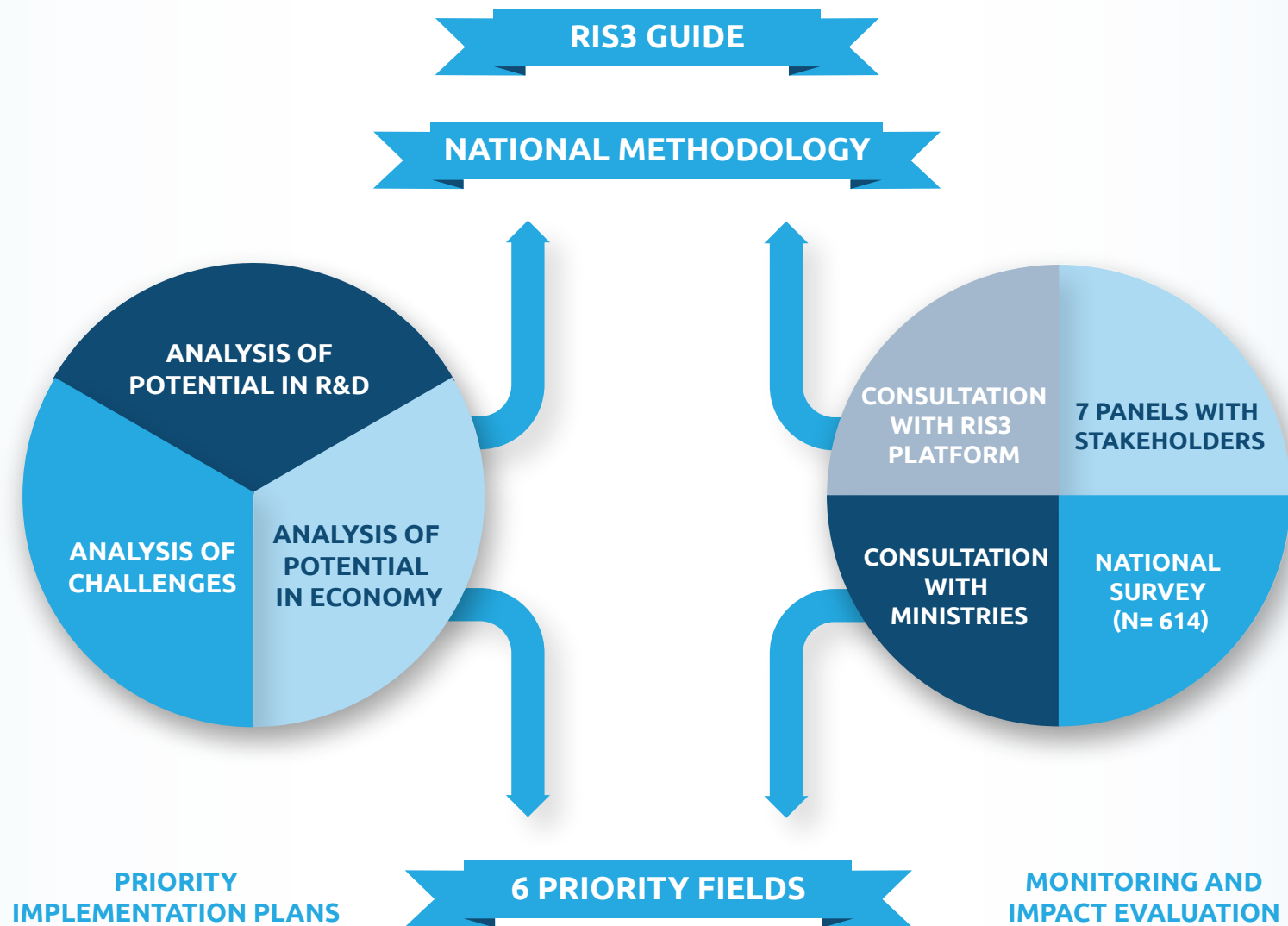
**HIGH DEPENDENCY ON  
THE SF SUPPORT**

## • PREVIOUS PRACTICES TO IDENTIFY RDI PRIORITIES •





# •IDENTIFICATION OF PRIORITY FIELDS•



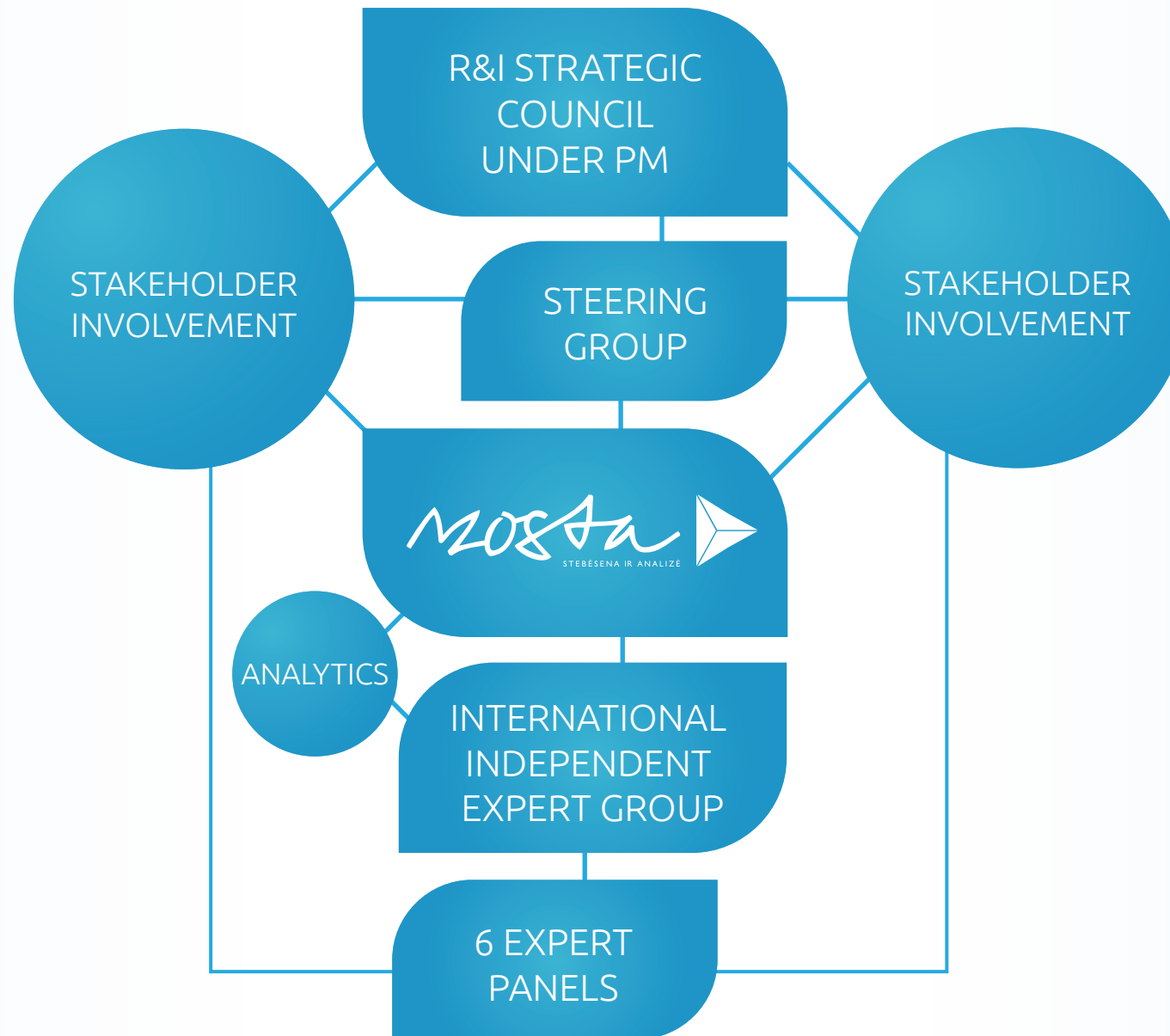
## • PRIORITY FIELDS •

PRIORITY FIELDS	R&D POTENTIAL	ECONOMIC POTENTIAL	CHALLENGES	RESEACH AND BUSINESS VALLEYS
 <b>ENERGETICS AND SUSTAINABLE ENVIRONMENT</b>	HIGH OR PROSPECTIVE 	„CONSUMERS“ (EXCL. IT)	***	SAULĖTEKIS, SANTARA, SANTAKA, NEMUNAS
 <b>AGRO-INNOVATION AND FOOD TECHNOLOGIES</b>	PROSPECTIVE 	„CONSUMERS“	*	NEMUNAS
 <b>HEALTH TECHNOLOGIES AND BIOTECHNOLOGY</b>	HIGH 	„CREATORS“ AND „CONSUMERS“	*	SANTARA, SANTAKA
 <b>INCLUSIVE AND CREATIVE SOCIETY</b>	PROSPECTIVE 	„CONSUMERS“ (EXCL. IT)	*	-
 <b>NEW PROCESSES, MATERIALS AND TECHNOLOGIES FOR MANUFACTURING</b>	HIGH 	„CREATORS“ AND „CONSUMERS“	*	SAULĖTEKIS, SANTAKA, SANTARA
 <b>TRANSPORTATION, LOGISTICS AND ICT</b>	PROSPECTIVE 	„CONSUMERS“ (EXCL. IT)	***	SAULĖTEKIS, SANTAKA, SANTARA, MARINE

\* - corresponds to the most important challenges identified by analysis

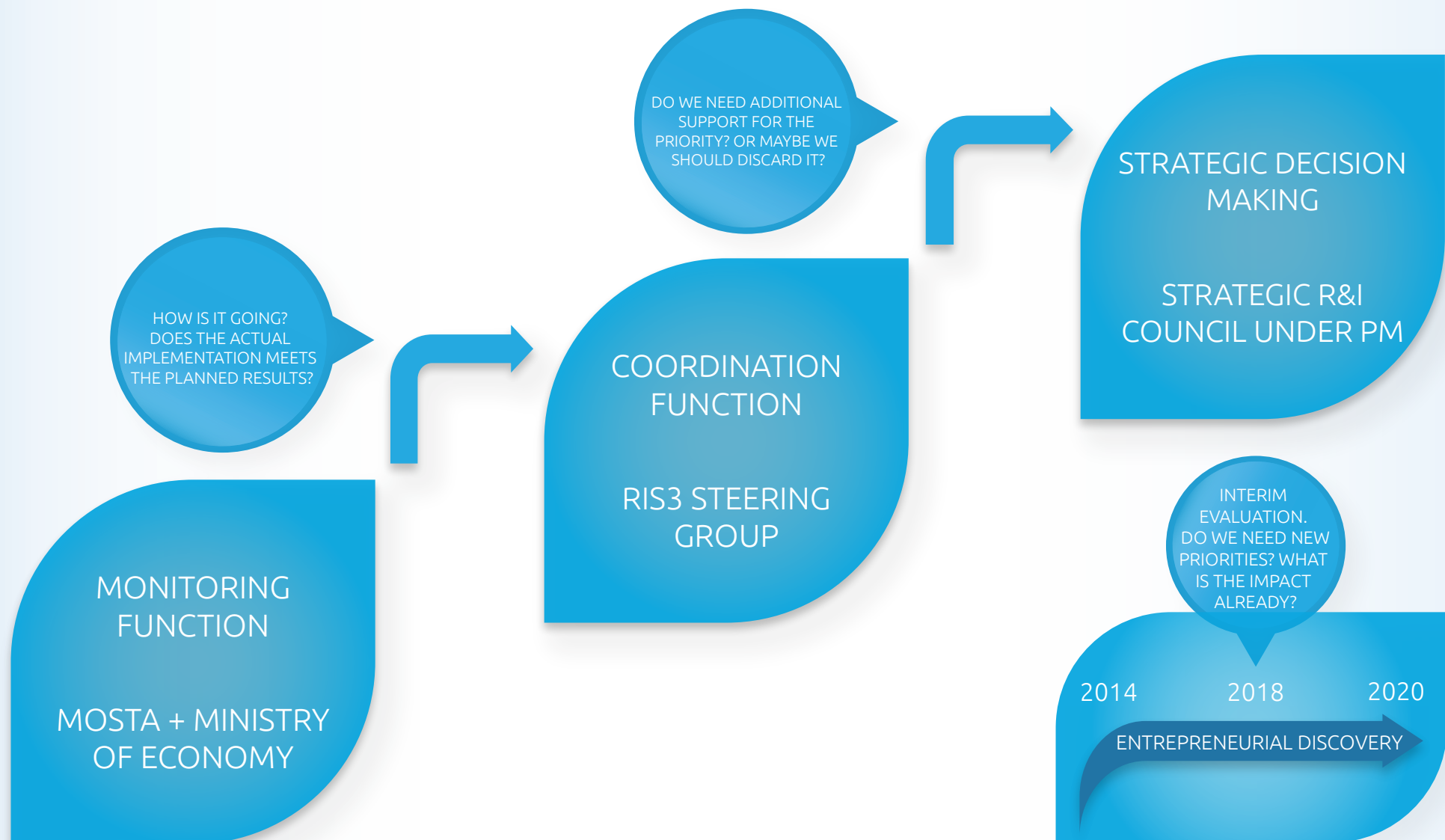
\*\*\* - corresponds to the most important challenges identified by analysis and ranked as most important by the survey

## • DEVELOPING THE STRATEGY: GOVERNANCE AND STAKEHOLDER INVOLVEMENT •





## • IMPLEMENTING THE STRATEGY: MONITORING AND MANAGEMENT •



# • MEASURES OF THE MINISTRY OF EDUCATION AND SCIENCE •



MINISTRY  
OF EDUCATION  
AND SCIENCE  
OF THE REPUBLIC OF LITHUANIA

**353 mEUR**

## ENHANCE THE USAGE OF EXISTING AND NEWLY DEVELOPED R&D INFRASTRUCTURE – 197 mEUR

ENHANCING R&I INFRASTRUCTURE  
AND INTEGRATION INTO THE  
EUROPEAN INFRASTRUCTURES  
188 mEUR



DEVELOPMENT OF CENTERS  
OF COMPETENCE  
8.7 mEUR



## INCREASE THE SCOPE OF COMMERCIALIZATION AND TECHNOLOGY TRANSFER – 156 mEUR

JOINT SCIENCE AND  
BUSINESS PROJECTS  
35.9 mEUR



RESEARCH IN THE  
AREAS OF RIS3  
80.8 mEUR



PROMOTION OF ACTIVITIES OF  
CENTERS OF COMPETENCE AND  
TECHNOLOGY TRANSFER CENTERS  
26 mEUR



ENCOURAGEMENT OF  
COMMERCIALIZATION AND  
INTERNATIONALIZATION OF R&D  
ACTIVITY RESULTS  
13 mEUR

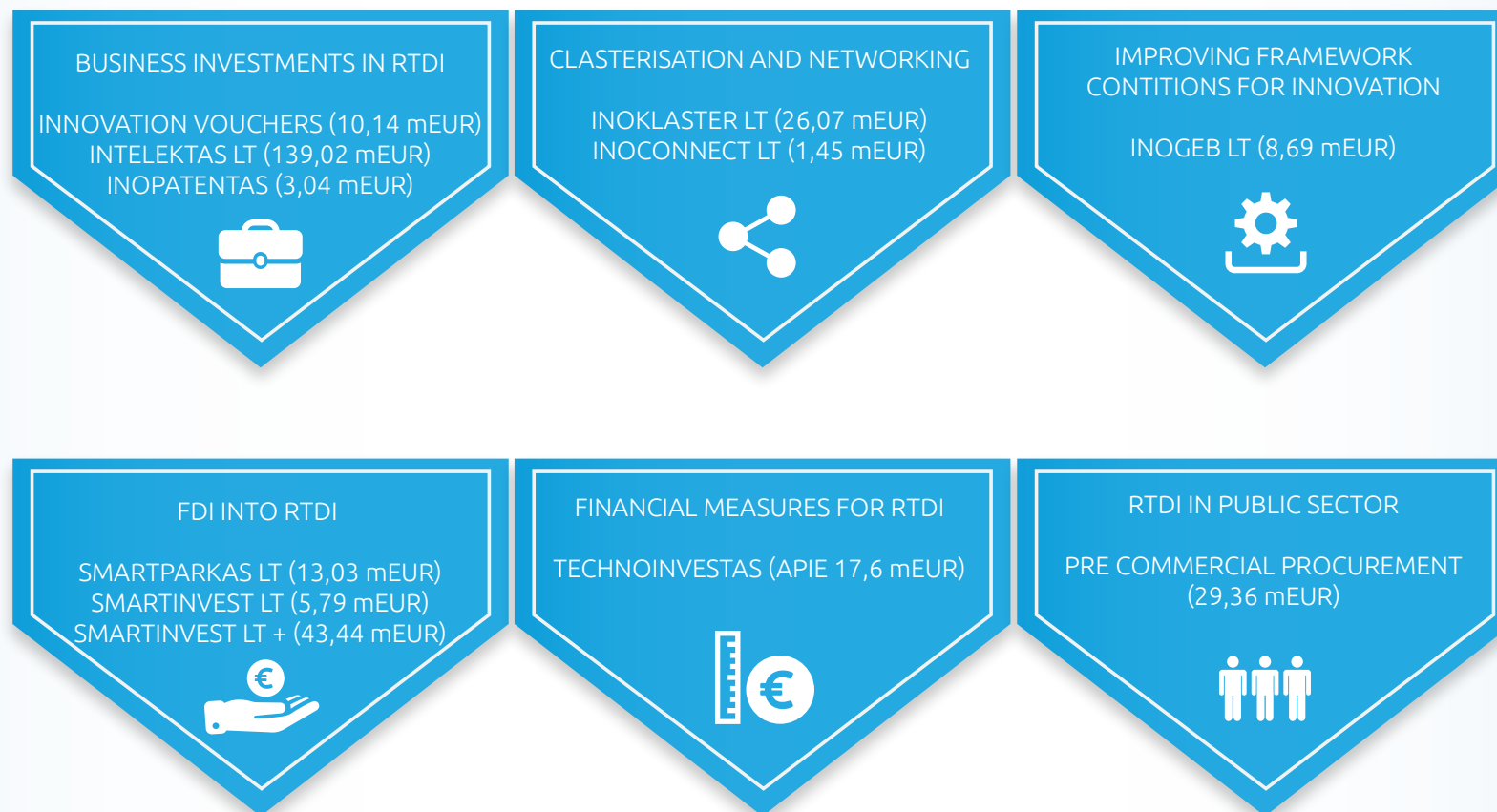


# • MEASURES OF THE MINISTRY OF ECONOMY •



**326 mEUR**

## INCREASE R&I ACTIVITIES IN PRIVATE SECTOR





## • LESSONS LEARNED •



**LEARNING PROCESS – THE OUTCOMES  
MIGHT NOT BE VISIBLE NOW**



**MEDIATION BETWEEN  
DIFFERENT GROUPS**



**PERSISTENCE VS. CONSTANT  
COMMUNICATION**



**POLITICAL INVOLVEMENT  
IS INEVITABLE**



**LEVERAGING BETWEEN TOO  
NARROW AND TOO BROAD**



**NEED FOR CLOSER COLLABORATION  
WITH THE NEIGHBORING REGIONS**

[sumani2020.it](http://sumani2020.it) ▶

*mosa* ▶

STEBESENIA IR ANALIZE