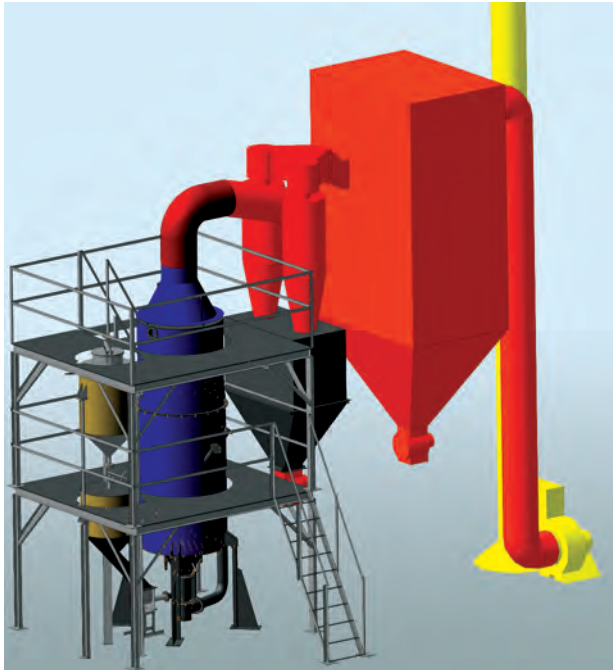
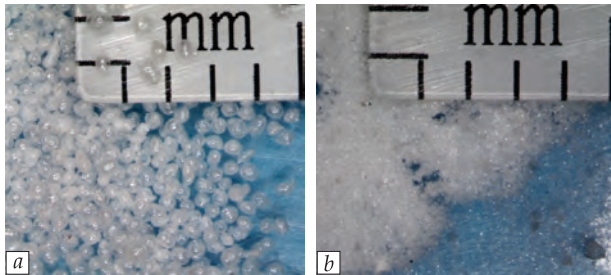


PLANT FOR PRODUCTION OF FINE LIGHTWEIGHT FILLER OR FILTER POWDER



Plant for production of fine lightweight filler or filter powder



Perlite filler (a) and perlite filter powder (b)

Areas of Application

The plant is designed for obtaining fine filler or filter powder from volcanic ash (perlite) of various deposits

Specification

Plant capacity, kg/h	500.0
Bulk product density, kg/m ³	100.0–150.0
Particle size, mm	0.5–0.1
Natural gas consumption, nm ³ /h	40
Overall dimensions, mm	7950 × 2900 × 7300

Advantages

The plant enables obtaining high-quality lightweight filler or filter powder from fine-powdered raw materials with a particle size up to 100 μm, which no competitors work with; a low natural gas consumption that makes up 70 nm³/ton raw materials; small size, easy installation, simple operation

Stage of Development. Suggestions for Commercialization

IRL6, TRL6
Manufacture, supply, maintenance,
and staff training, upon request

IPR Protection

IPR3

Contact Information

Boris K. Ilienکو, Gas Institute of the NAS of Ukraine;
+38 044 456 03 56, e-mail: bor.ilienko@gmail.com; ig-secr@i.com.ua